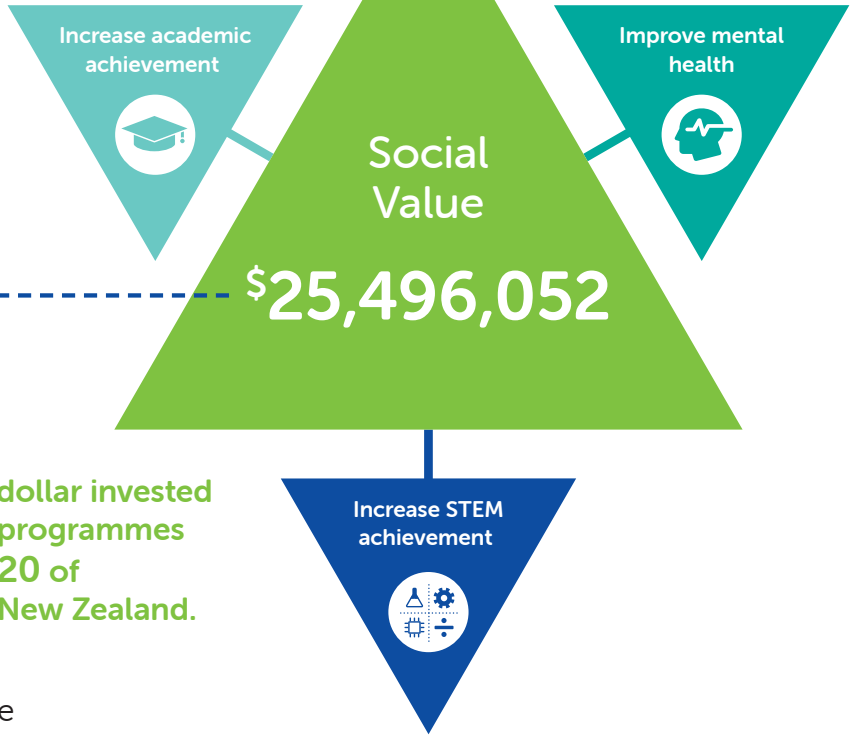


Every year, House of Science Te Whare Pūtaiao delivers \$25,496,052 of measurable good to society in New Zealand.



This means that every dollar invested in House of Science programmes delivers \$10.20 of measurable good to New Zealand.

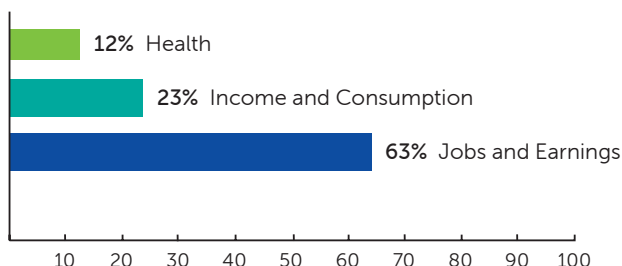
According to ImpactLab, House of Science real-world value is even greater than this as some outcomes, such as improve critical thinking, cannot yet be directly quantified with available data.

Social value breakdown

House of Science creates social value across different aspects of people's lives.

The chart below shows the breakdown of social value created according to the Living Standards Framework*. Each domain highlights a different aspect of wellbeing.

Social value by domain (%)



When ImpactLab considered the operating costs of House of Science, they estimated the social return on investment that is generated for every dollar that is invested in the programme.

Social value generated for each participant:	\$397
Measurable benefits as proportion of programme cost:	1020%
Cost of the programme per participant:	\$37

*The Living Standards Framework is a practical application of national and international research around measuring wellbeing. It was designed drawing from the Organisation for Economic Co-operation and Development's (OECD) internationally recognised approach, in consultation with domestic and international experts, and the NZ public.

Definitions

Jobs and Earning: Freedom from unemployment

Income and Consumption: People's disposable income

Health: People's mental and physical health